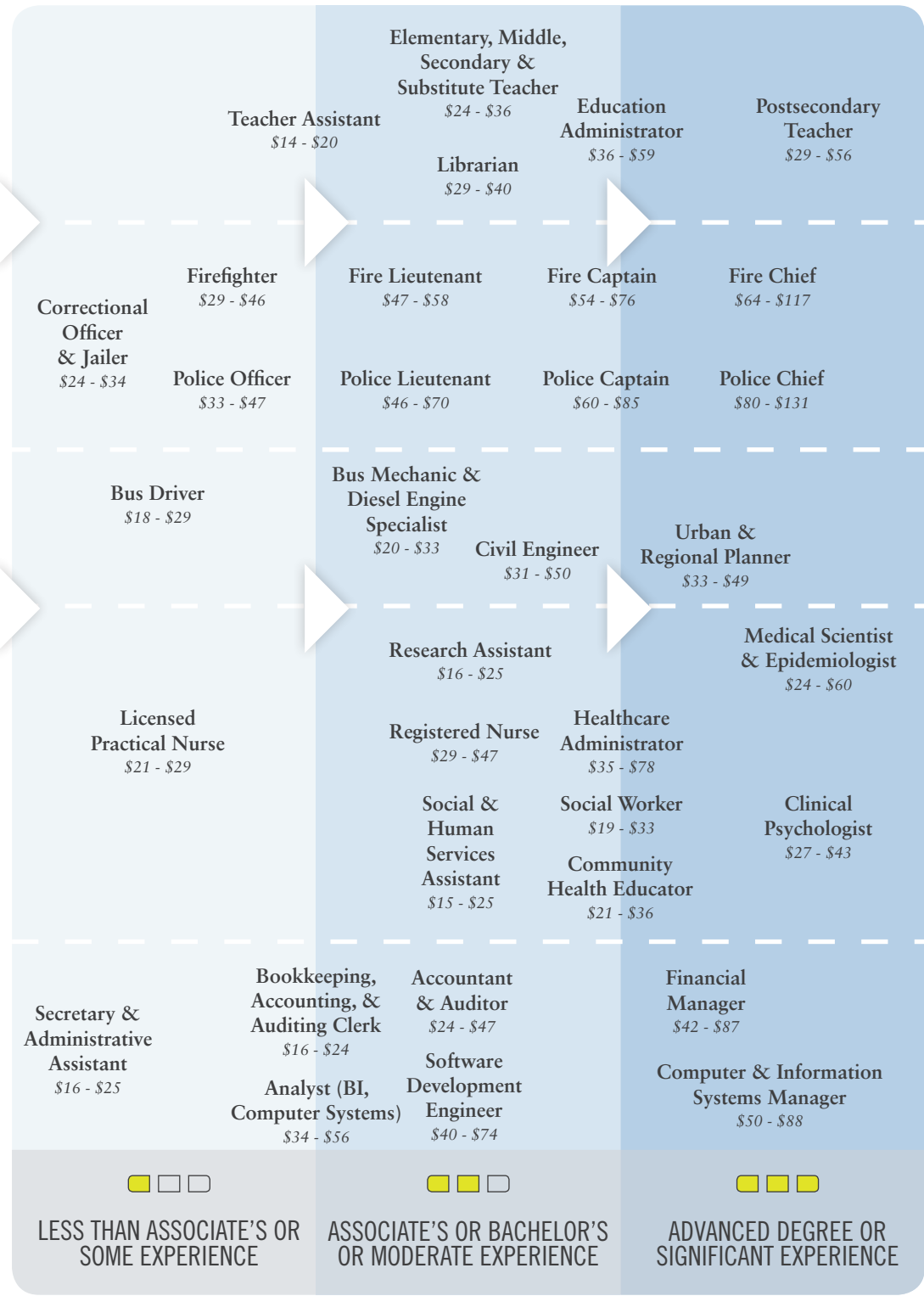


MAP your CAREER
 JOB INFO & MORE AT
MapYourCareer.org/Public-Sector

PUBLIC SECTOR



EDUCATION (SCHOOLS & LIBRARIES)

PUBLIC SAFETY & EMERGENCY SERVICES

TRANSIT SERVICES

PUBLIC HEALTH & SOCIAL SERVICES

GOVERNMENT OPERATIONS

This map includes some of the most in-demand public sector jobs in Seattle-King County. Roles and skillsets vary more widely than in other industries, from social services, to public infrastructure, to natural resource management. Advancement in some branches is attached to education, while others require hands-on experience. Most types of occupations exist within the public sector.

START

- Janitor & Cleaner
- Crossing Guard
- Office & Information Clerk
- Help Desk
- Community Health Worker

\$13 - \$23

ENTRY-LEVEL (MAY REQUIRE CERTIFICATION)

□ □ □

- TRANSFER SKILLS BETWEEN**
- Healthcare
 - Construction
 - Professional, Scientific & Technical Services
 - Information Technology
 - Trade

Range of hourly wages from entry-level to experienced (2018), Emsi

LESS THAN ASSOCIATE'S OR SOME EXPERIENCE

ASSOCIATE'S OR BACHELOR'S OR MODERATE EXPERIENCE

ADVANCED DEGREE OR SIGNIFICANT EXPERIENCE